



Plastsystem

PSW1 appendix

Rev 0

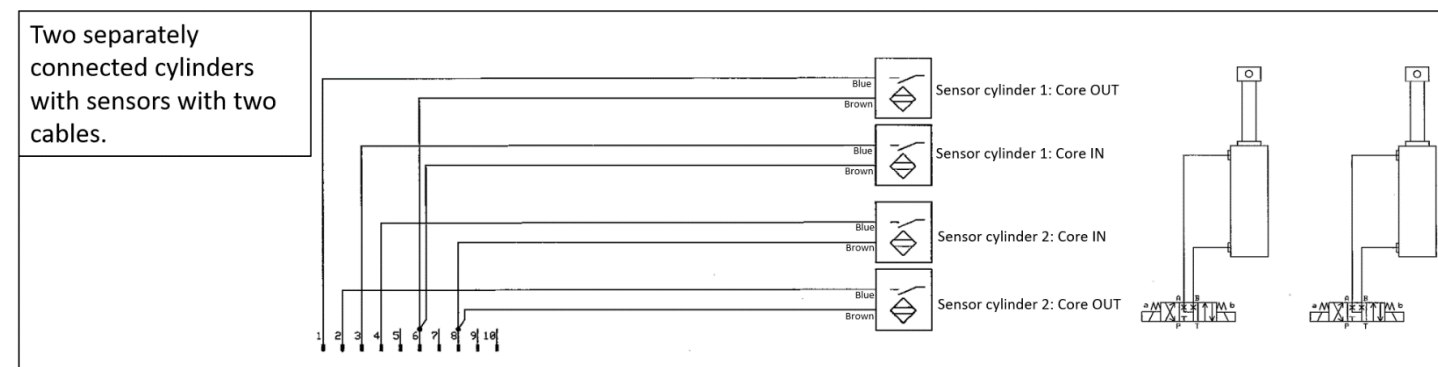
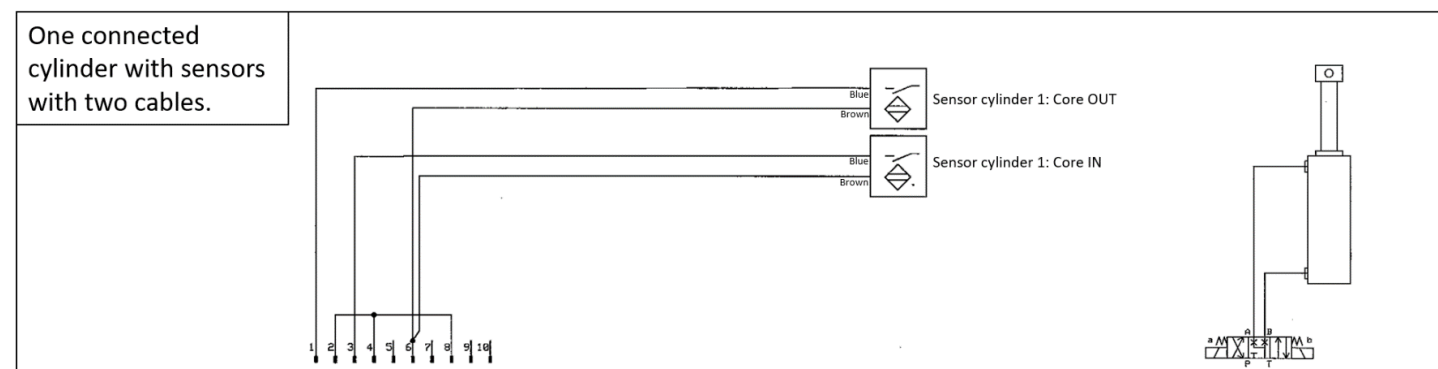
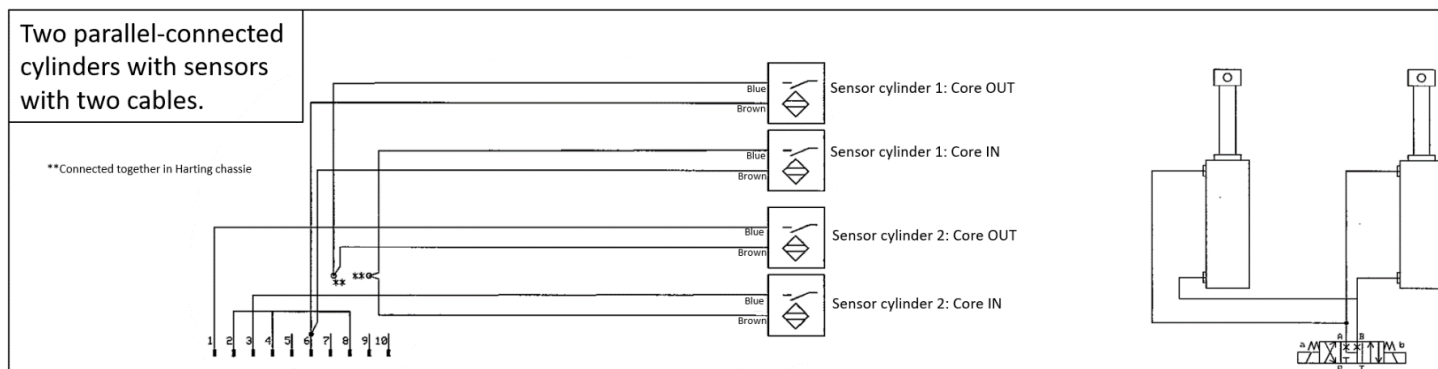
2022-08-18



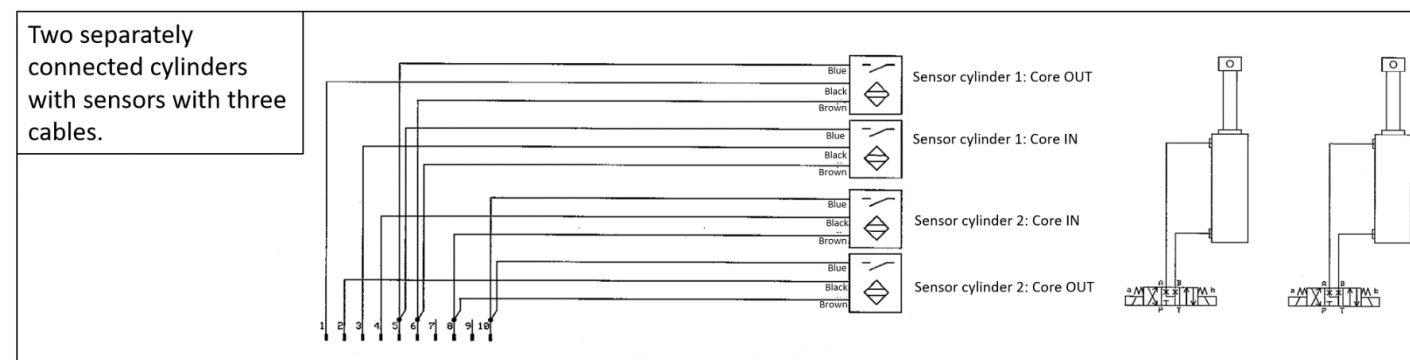
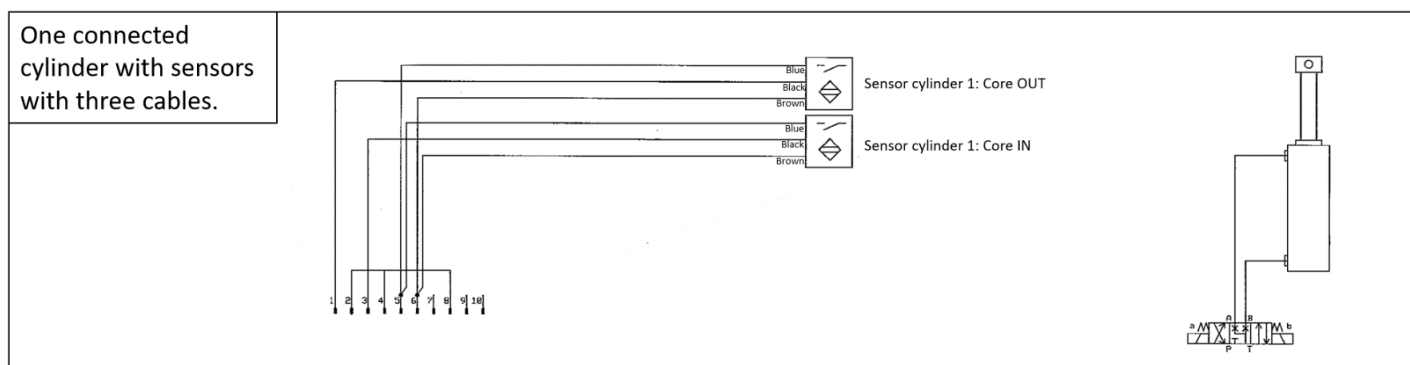
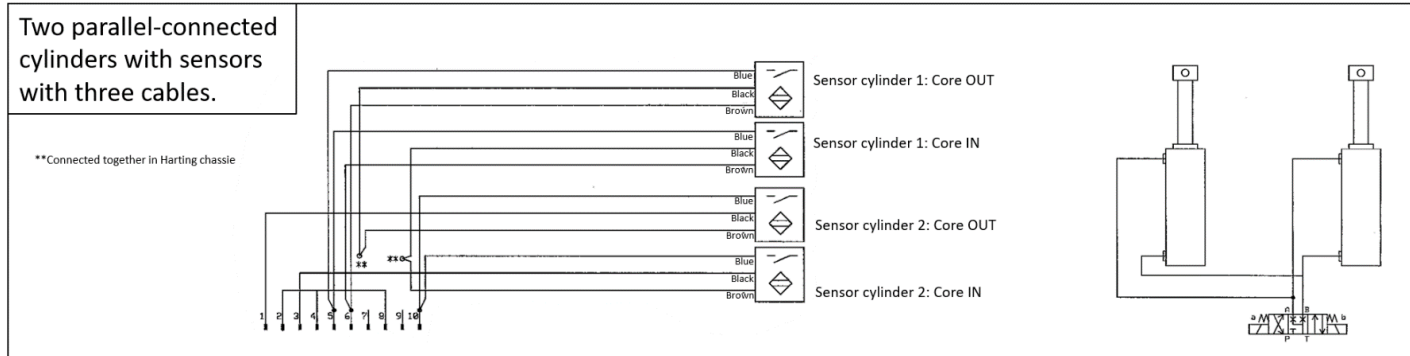
Contents:

- 1. Hydraulic sliders, wiring diagram sensors (two cable)**
- 2. Hydraulic sliders, wiring diagram sensors (three cable)**
- 3. Hot runner wiring diagram (Harting 10-pin)**
- 4. Hot runner wiring diagram (Harting 16-pin)**
- 5. Hot runner wiring diagram (Harting 24-pin)**
- 6. Ejector Crouzet wiring diagram (Harting 3-pin)**

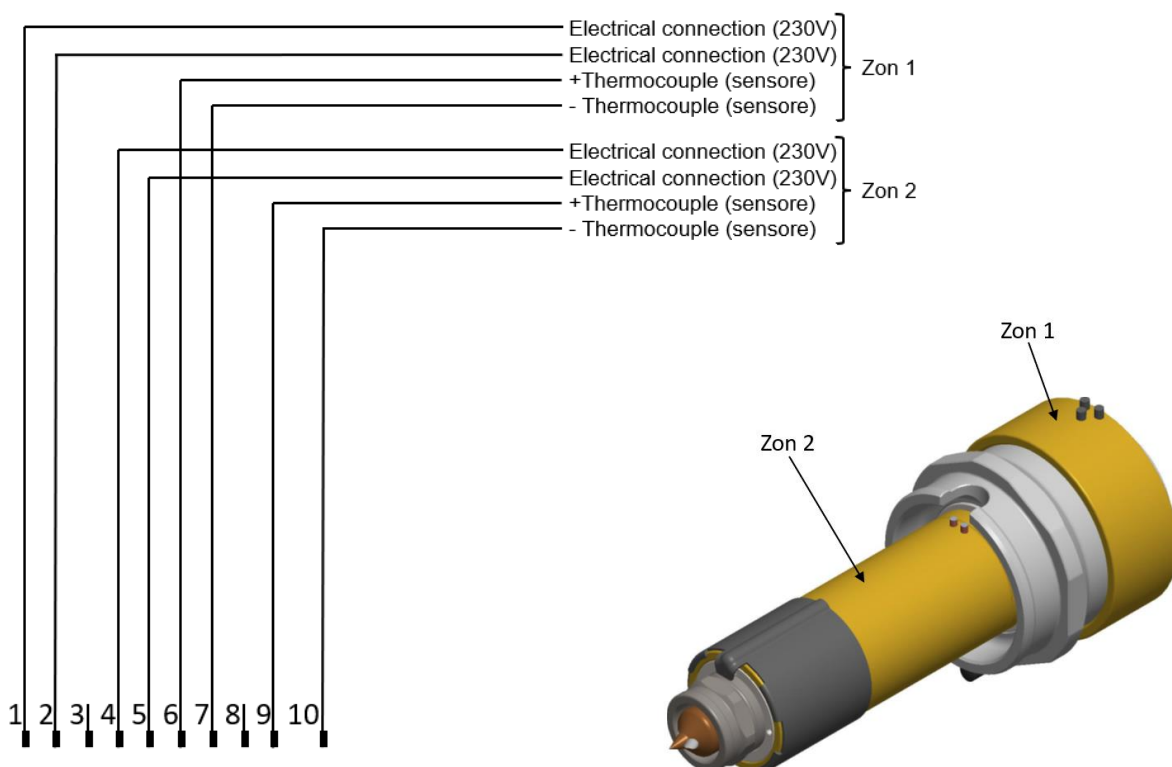
1. Hydraulic, wiring diagram for sensors with two cables



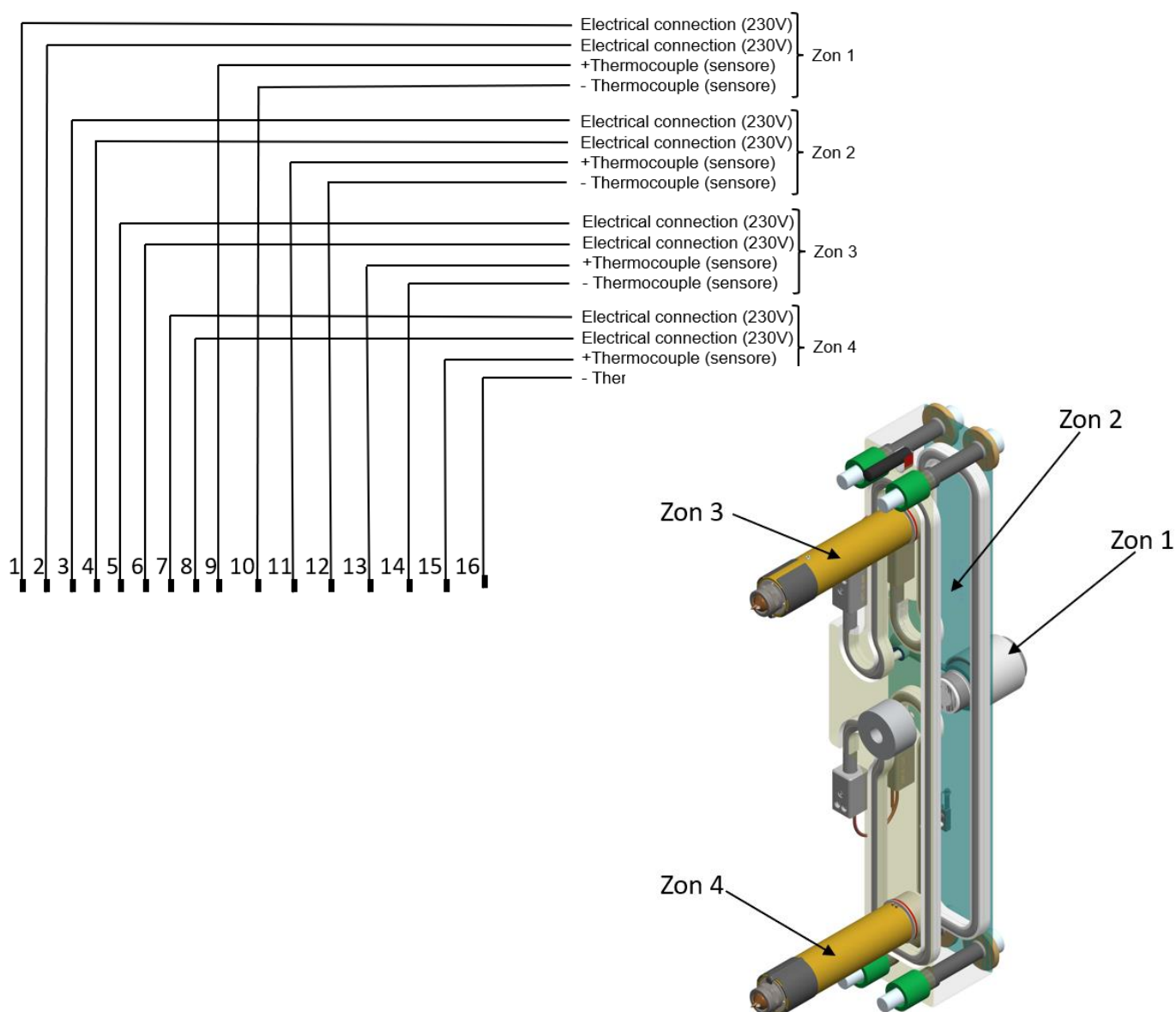
2. Hydraulic, wiring diagram for sensors with three cables



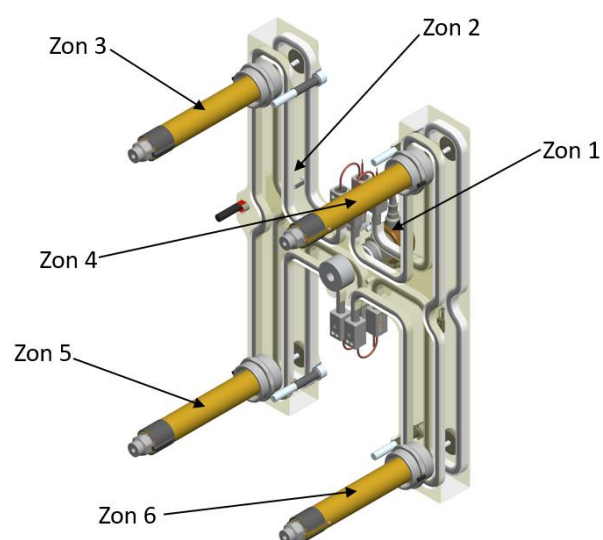
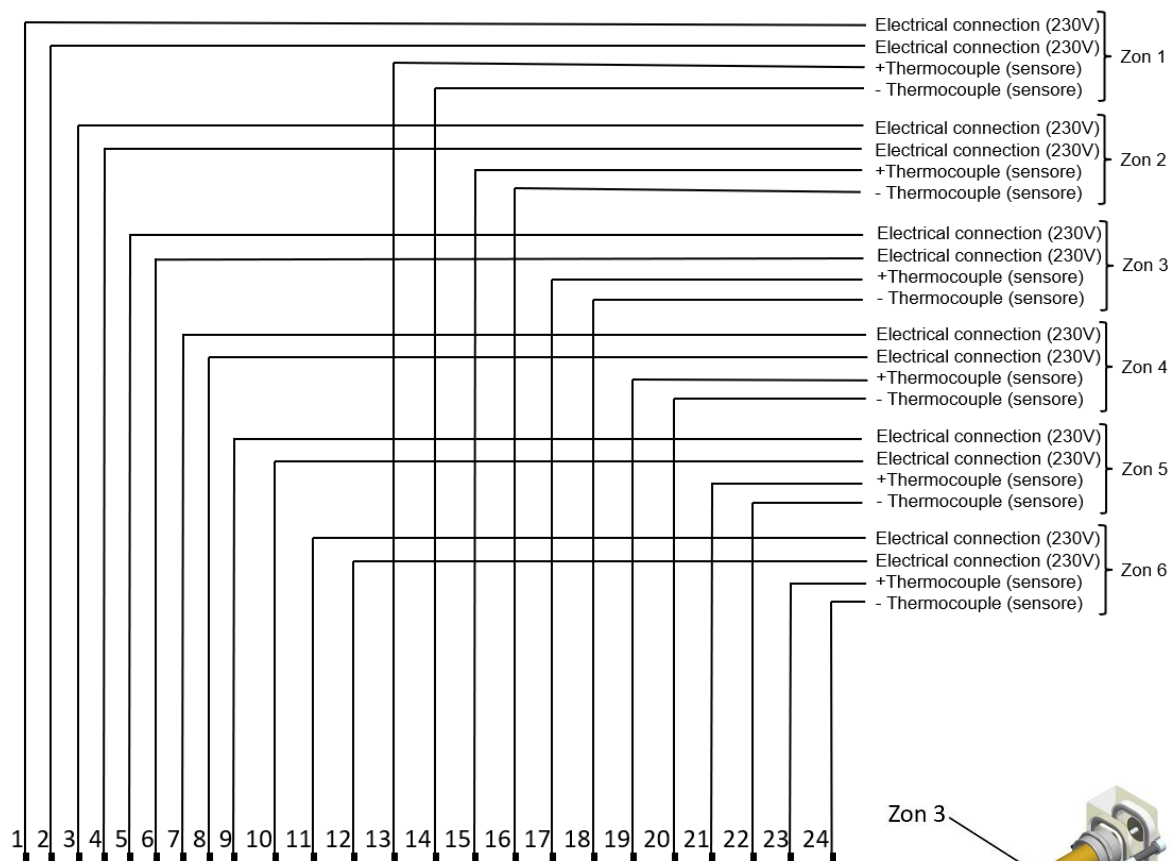
3. Hot runner, wiring diagram Harting 10-pin



4. Hot runner, wiring diagram Harting 16-pin



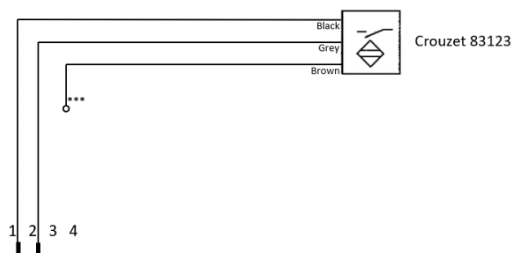
5. Hot runner, wiring diagram Harting 24-pin



6. Ejector Crouzet wiring diagram Harting 3-pin

One connected Crouzet sensors with two cables.

***Isolated and not connected





7.



8.



9.



10.



11.



12.



13.

